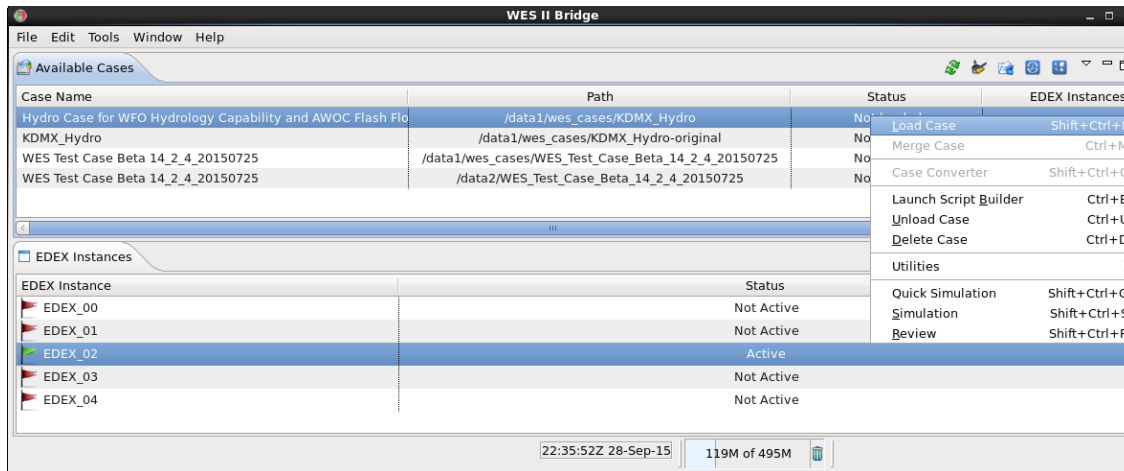
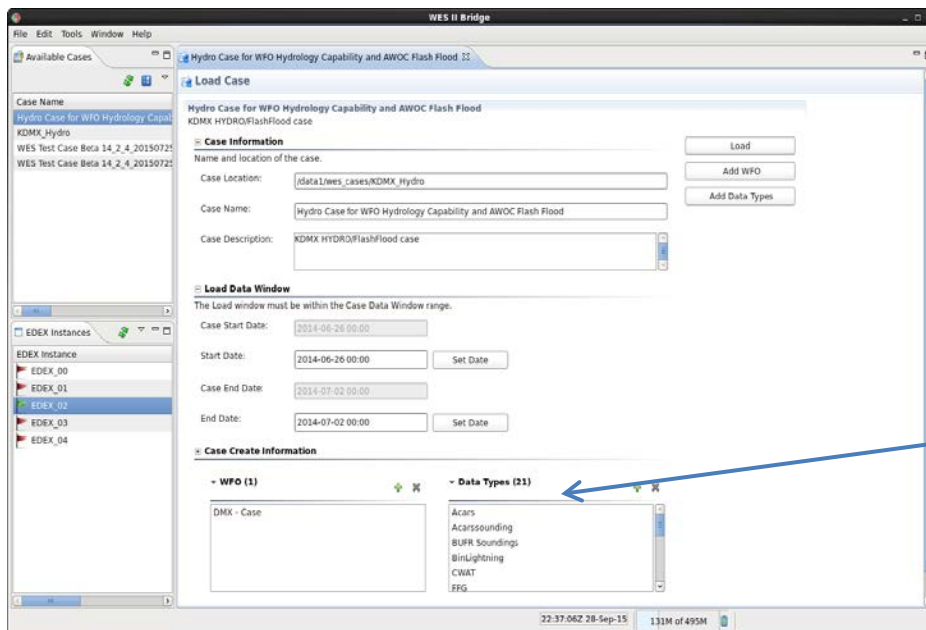


WES-2 Bridge WFO Hydro Simulation Quick Start Guide

1. Open an instance of WES-2 Bridge (see jobsheets if you need assistance.)
2. Find the case labeled Hydro Case for WFO Hydrology Capability and AWOC Flash Flood. Right click over it and select “Load Case.”

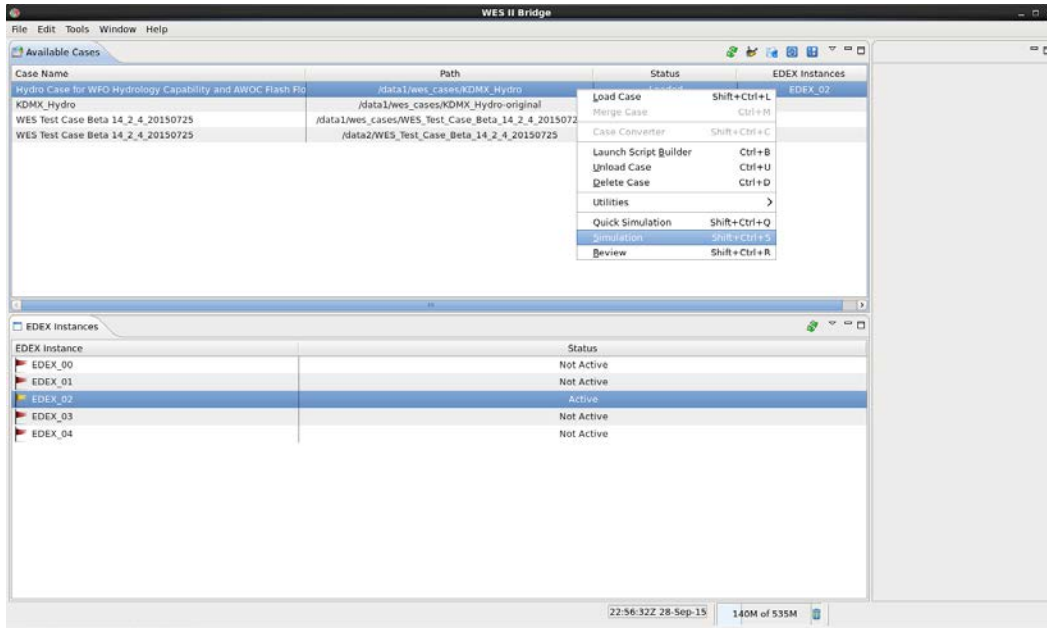


3. The metadata should look like the screen below, double check and hit “Load.” It will take about 15 minutes to load the first time.

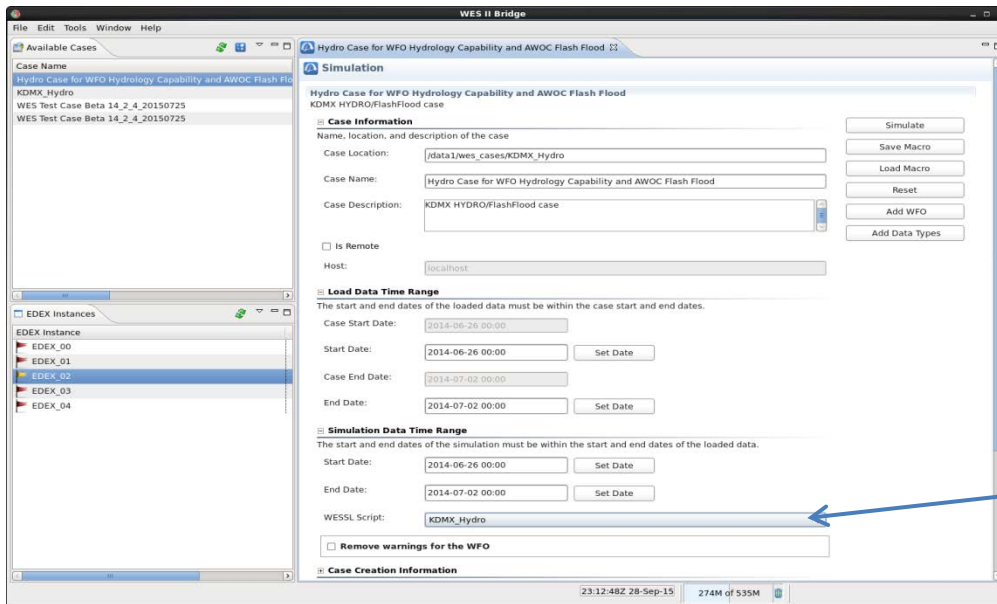


Ensure “Hydro”
is a data type.

4. Once the case is loaded, right click again and select “Simulation.”



5. On the next screen make sure that the “KDMX_Hydro” WESSL script is selected. Double check the metadata and select “Simulate.” It may take several minutes for the hydro data to initialize, but the opening WESSL presentation should pop up shortly and give you your initial instructions.



Ensure you select the WESSL Script here.

6. Hit the “PLAY” button in the Simulation Controls window, which will pop up about the same time CAVE opens to start the sim (and for the “Skip” feature to work.)

